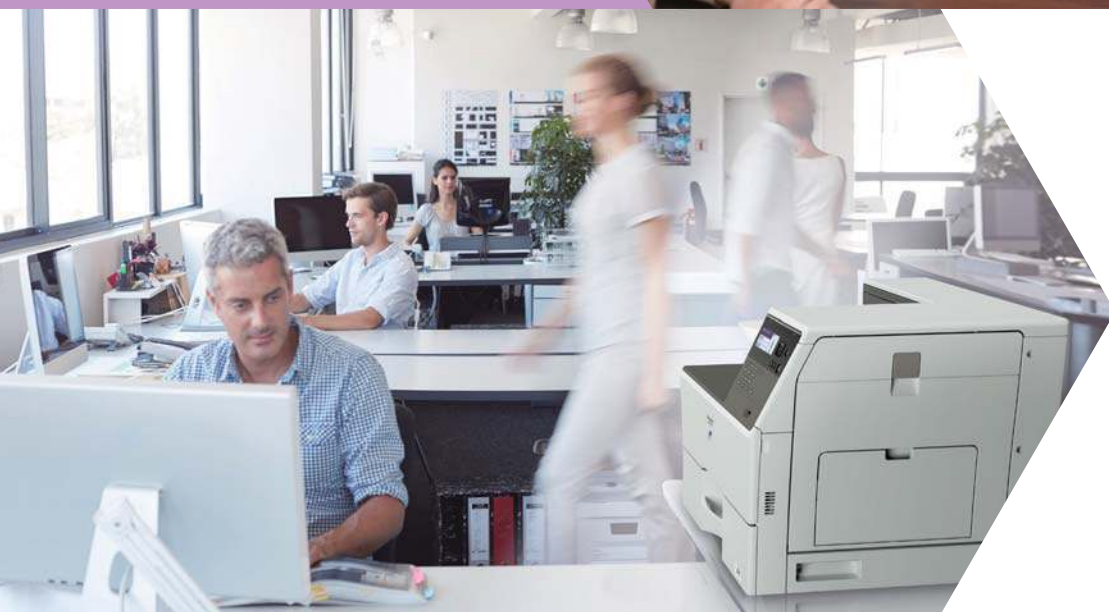


SHARP

Be Original.

MX-B450P
MX-B350P

Laser Printer



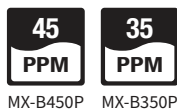
**Smooth Print Functionality
with Wireless Support**



Efficient Output

This printer delivers a fast output of 45/35 ppm*. The first printout comes out in 5.0/5.5 seconds, saving you valuable time when performing multiple short-run jobs. The printer's warm-up time of 29 seconds brings added efficiency and reduces overall energy consumption.

* A4, short-edge feeding



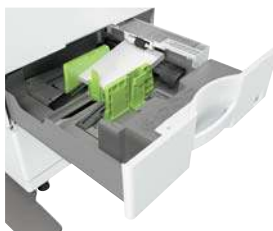
MX-B450P MX-B350P

Wireless Connections

This printer offers ultra-handly wireless access via two easy modes, enabling convenient access to the printer even from places where it's difficult to connect a LAN cable.

Ample Paper Capacity and Various Paper Sizes

The printer has a standard paper capacity of 550 sheets, which can be expanded to 1,150 sheets. A wide variety of paper sizes, including A6, are accommodated by the standard tray, as well as by the multi bypass tray. The optional paper feed unit and multi bypass tray handle legal-size paper and paper up to 220 g/m² thick.



Direct Printing with USB Drives

This printer allows direct printing of PDF/TIFF/JPEG files. Insert a USB drive into the printer and a command screen automatically pops up on the LCD. Right away you can print files from the USB drive.

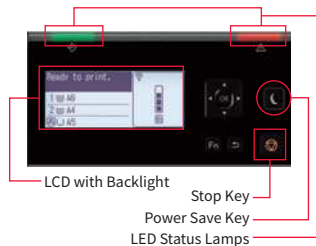


Sharpdesk Mobile

Sharpdesk Mobile is a mobile print application that connects the printer to mobile devices. Files on a mobile device can be easily printed out on the printer.

LED Status Lamps

Next to the control panel are two LED lamps: one red, one green. These light up to notify you—even from a distance—of the status of the machine.



Other Key Features

- Standard-equipped with PCL 6 emulation and PostScript® 3™ emulation
- SRDM (Sharp Remote Device Manager)*¹ software allows centralised control of networked printers and MFDs
- User authentication prevents unauthorised use of the printer. Up to 30 users can register a unique access number.
- Retained data can be erased when it's time to replace the printer
- Extremely small footprint*² (428 x 507 mm)

*¹: Contact a Sharp customer representative for availability and other details.

*²: "Footprint" refers to the part directly adjacent to the floor or desk space. The numerical value is for the printer's base unit only.

SPECIFICATIONS

General	
Type	Desktop
Engine speed	A4* ¹ : Max. 45/35 ppm
Control panel display	5-line LCD
Paper size	Max. A4, min. A6
Paper capacity	Standard: 550 sheets (500-sheet tray and 50-sheet multi bypass tray) Maximum: 1,150 sheets (550 sheets & optional 600-sheet tray)
Paper weight	Tray 1: 60 g/m ² to 105 g/m ² Tray 2 (MX-CS14): 55 g/m ² to 220 g/m ² Multi bypass tray: 55 g/m ² to 220 g/m ²
Warm-up time* ²	29 sec.
First print time* ³	5.0/5.5 sec.
Memory	1 GB
Power requirements	Rated local AC voltage ±10%, 50/60 Hz
Power consumption	Max. 1.84 kW (220 V to 240 V)
Dimensions (W x D x H)* ⁴	489 x 517 x 440 mm
Weight (approx.)	23 kg

Network Printer	
Resolution	600 x 600 dpi
Interface	USB 2.0 (host, high-speed), 10Base-T/100Base-TX/1000Base-T, wireless LAN (IEEE 802.11 n/g/b)
Supported OS	Windows Server® 2008, Windows Server® 2008 R2, Windows Server® 2012, Windows Server® 2012 R2, Windows Server® 2016, Windows® 7, Windows® 8.1, Windows® 10, Mac OS 10.6, 10.7, 10.8, 10.9, 10.10, 10.11, 10.12, 10.13
Network protocols	TCP/IP
Printing protocols	LPR, Raw TCP (port 9100), FTP for downloading print files, IPP, WSD
PDL	PCL 6 emulation, PostScript® 3™ emulation
Available fonts	80 fonts for PCL, 136 fonts for PostScript 3 emulation

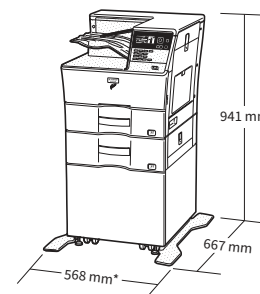
*¹: Short-edge feeding.

*²: In a standard measurement environment. May vary depending on operating conditions and environment.

*³: Short-edge feeding of A4 sheets from 1st paper tray, printer in fully ready condition. May vary depending on operating conditions and environment.

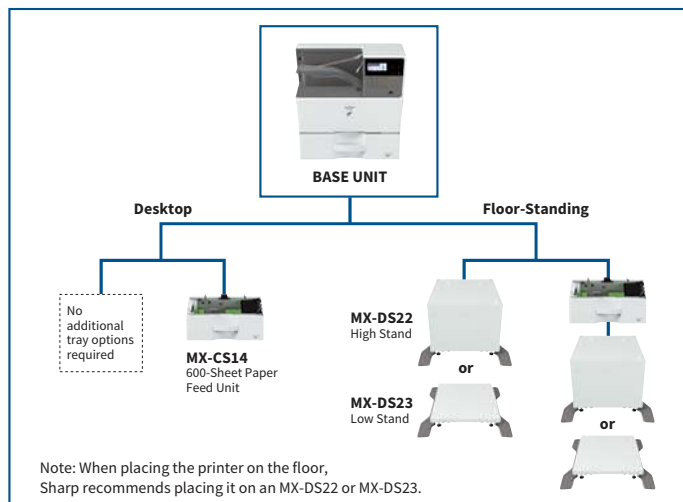
*⁴: Including adjusters and protuberances.

- Design and specifications are subject to change without prior notice.
- PCL is a registered trademark of Hewlett-Packard Company. PostScript 3 is either a registered trademark or trademark of Adobe Systems Incorporated in the US and/or other countries. Windows Server and Windows are either registered trademarks or trademarks of Microsoft Corporation in the US and/or other countries. Mac is a trademark of Apple Inc., registered in the US and other countries. All other brand names and product names may be trademarks or registered trademarks of their respective owners.



* 702 mm when multi bypass tray is extended.

SYSTEM CONFIGURATION



Distributed by:

SHARP CORPORATION OF AUSTRALIA PTY LTD

ABN 40 003 039 405

P.O. Box 84, Macquarie Park, NSW 2113

Tel: (02) 9830 4600

www.sharp.net.au

SHARP

©SHARP CORPORATION (AUG. 2018)